



Martinsville Southern Connector Study
Route 220 Environmental Impact Statement

MARTINSVILLE SOUTHERN CONNECTOR STUDY CITIZEN INFORMATION MEETING

Magna Vista High School
701 Magna Vista School Road
Ridgeway, Virginia 24148

May 8, 2018

MEETING OVERVIEW AND OBJECTIVES

Introduce study purpose and area for analysis

Provide overview of the study process

Gather public input on transportation issues and social, economic, and natural environmental resources to be considered within or surrounding the study vicinity



OVERVIEW AND PURPOSE OF STUDY

Analysis of options to improve the U.S. 220 corridor between U.S Route 58/U.S. Route 220 bypass and the North Carolina state line, including the following process:

- Identification and documentation of current conditions and transportation needs;
- Development of a range of alternatives to address the needs;
- Evaluation of the potential environmental impacts of each alternative;
- Recommendation of a selected alternative; and
- Decision by FHWA to allow the selected alternative to advance.

Separate study from Interstate 73

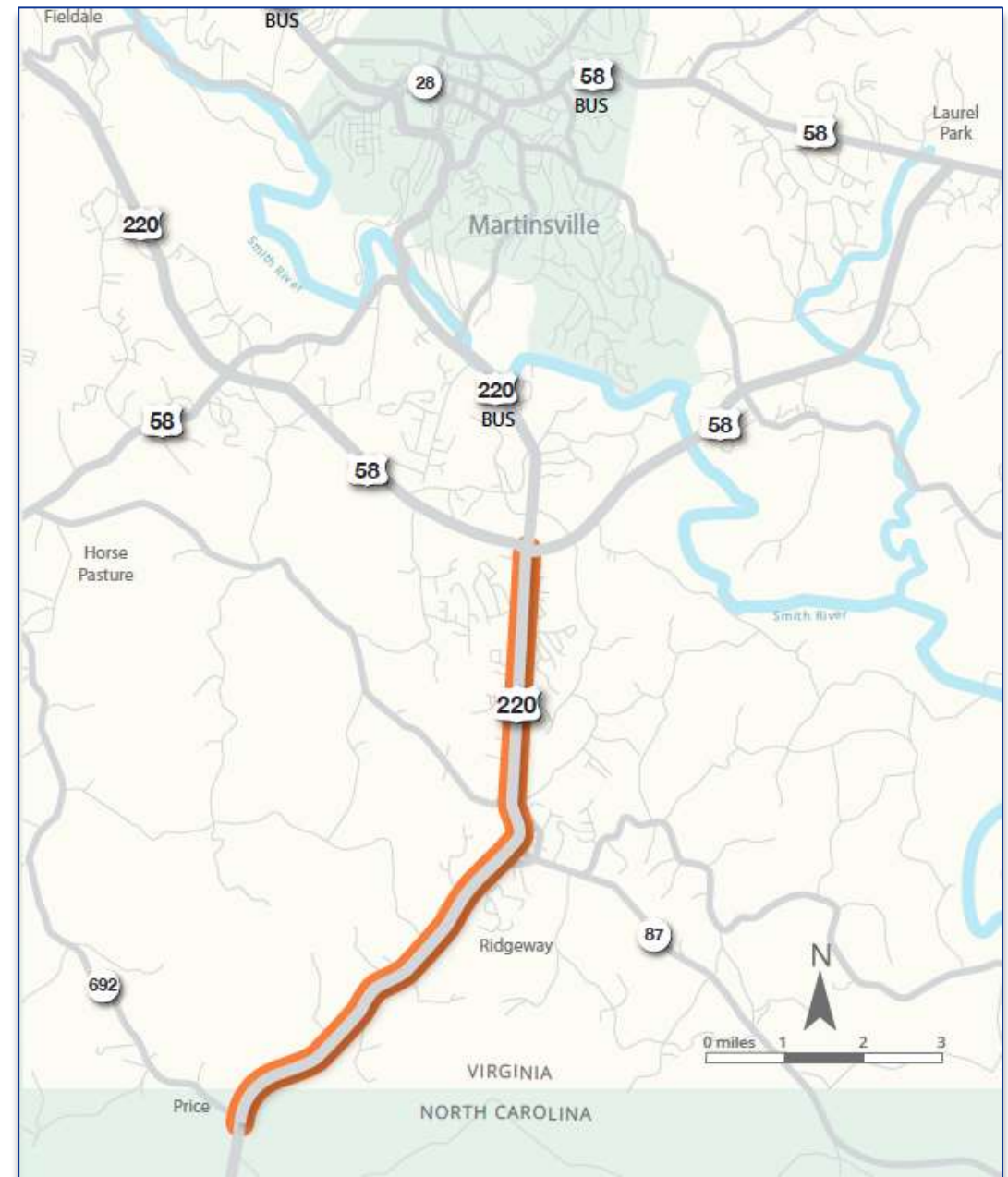
STUDY VICINITY

Henry County, Virginia

Approximately seven miles along U.S. Route 220 corridor

- From: Near North Carolina State Line
- To: U.S. Route 58/U.S. Route 220 Bypass

Alternatives may include modifying access or potential new roadway along different alignments



STUDY PROCESS

The Environmental Impact Statement will analyze the possible social, economic, and natural environmental impacts that could result from the potential alternatives, based on the following process.



◆ Agency Concurrence Point, required by statewide National Environmental Policy Act and Clean Water Act (Section 404) merged process for highway projects in Virginia.

★ Opportunity for Public and Agency Involvement

▲ Funding for a subsequent phase of the project (e.g., detailed design, final design and right of way, or construction) must be shown in the Statewide Transportation Improvement Program before the Federal Highway Administration can sign a Record of Decision.

Public is an input important component throughout the study process

SCOPING AND STUDY INITIATION



What is scoping?

- First step in the study process
- Early public outreach to determine issues to be evaluated; additional public outreach to follow as study advances
- Input received helps determine the issues, needs, and social, economic, and natural environmental resources to be considered

What are the preliminary needs anticipated to be evaluated in the study?

- Safety
- Mobility
- Access

ENVIRONMENTAL RESOURCES TO BE CONSIDERED

- Community Facilities
- Low-Income/Minority Populations
- Wetlands and Streams
- Wildlife and Habitat
- Parks, Recreation and Open Space
- Farmland
- Energy
- Noise
- Air Quality
- Visual
- Topography, Soils, and Geology
- Historic and Cultural Resources
- Hazardous Materials



STUDY ACTIVITIES UNDERWAY

Data collection

- Gathering roadway traffic counts and developing future traffic forecasts
- Evaluating existing and future land use plans
- Collecting social, economic, and natural environmental resources information
- Soliciting public feedback



Citizen Information Meeting



Traffic volume counter

STUDY SCHEDULE

Milestone	Approximate Milestone date			
	2018	2019	2020	2021
Study Initiation	February			
Public EIS Scoping Meeting WE ARE HERE	May			
Purpose and Need	Late			
Range of Alternatives		Early		
Draft EIS		Late		
Draft EIS Public Hearing			Early	
Selected Alternative			Early – Mid	
Final EIS				Early
Federal Highway Administration Record of Decision				TBD

WE WANT YOUR INPUT

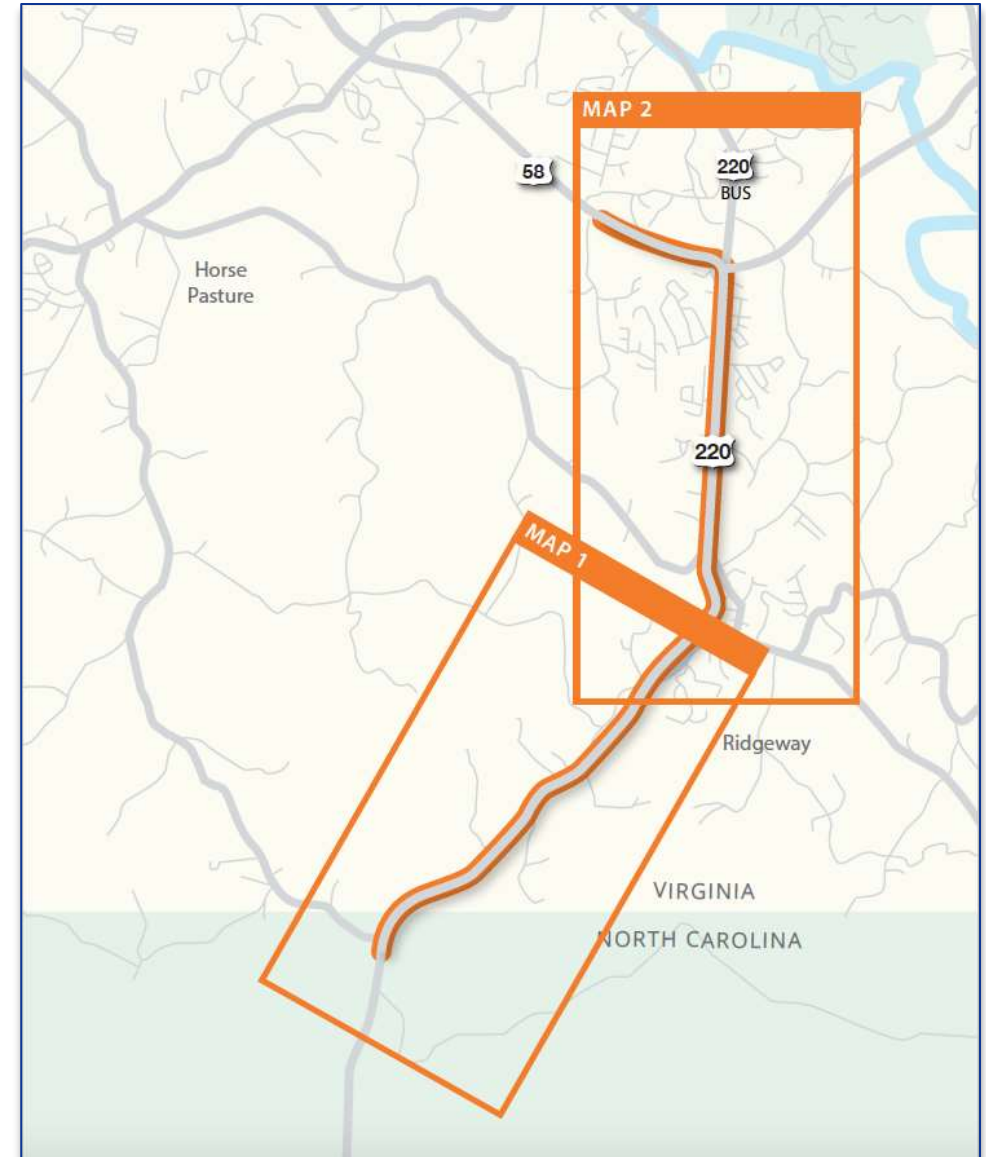
Input requested during tonight's meeting:

- Public comments on transportation issues within and surrounding the U.S. Route 220 corridor
- Input on social, economic, and natural environmental resources that may need to be considered as part of the study

Hands-on map section

Verbal comments

- Court reporter accepting verbal input



THANK YOU!



Martinsville Southern Connector Study
Route 220 Environmental Impact Statement